



Hope Mennonite Church
9:30 am Worship
March 7, 2021
Third Sunday in Lent

Gathering to Worship

Prelude	"Mountain of God"	Voices Together 11
---------	-------------------	--------------------

Welcome

*Call to Worship God's Covenant of Commandments

Come, people of God! Let us worship the God of relentless promise. Let us praise the God of everlasting covenant.

We affirm with the Scriptures that life with a holy God requires structure. So, our covenant God gives to us the gift of relationship and rules.

God expresses his love for us with commandments.

God shows us his love by saying, "Thou shalt!"

and "Thou shalt not!"

**Let us in turn show our love for God
by our glad obedience.**

Come, people of God!

Let us worship the God of relentless promise.

Let us praise the God of everlasting covenant.

Opening Prayer

Songs of gathering

"Here in This Place"

Voices Together 10

"My Lighthouse"

Voices Together 597

Confession of Sin & Assurance of God's Abiding Presence & Grace

O God, we call you ruler of all. And yet sometimes we avoid applying your rules in our decision-making and actions. At other times we hold so tightly to rules that we injure or break relationships or limit your possibilities in our lives.

[Silent Confession]

O God, restore us. Renew our trust in your design for our guidance and give us the courage to pursue the path you mark out for us.

Hearing God’s Word

Scripture reading

Mark 4:31-35

Sermon

Dave Stevens

“The Questioning & the Questioned Community”

Responding to God’s Word

“Be Still, My Soul”

Voices Together 664

The Giving of our Tithes and Offerings – First Fruits Sunday

Offertory

Prayer of Thanksgiving

*Greeting our Guests

Seeing and Seeking God

Work of the Church

Sharing our Praises and Concerns

Prayers of God’s People

Sending

“We Are Often Tossed and Driven”

Voices Together 311

Colors of Covenant

Jesus embodies God’s covenant, God’s promise of life, and yet that promise is increasingly threatened. Each Sunday of Lent we remove a strip of cloth from the worship center to symbolize the threat and God’s enduring promise.

*Benediction

Friends, who will separate us from the love of Christ? Will hardship, or distress, or persecution, or famine, or nakedness, or peril, or sword? ... No, in all these things we are more than conquerors through the One who loved us. For I am convinced that neither death, nor life, nor angels, nor rulers, nor things present, nor things to come, nor powers, nor height, nor depth, nor anything else in all creation will be able to separate us from the love of God in Christ Jesus our Lord.” Amen. (Romans 8:35, 37-39).

Stay in Touch with Hope

Hope Mennonite Church
868 N. Maize Rd.
Wichita, KS 67212

phone 722-0903
fax 722-5173
www.hopemennonite.org

Pastor

Dave Stevens 796-0114 pastor@hopemennonite.org
Emergencies 267/374-9419

Secretaries

Cynthia Loganbill 721-8807 secretary@hopemennonite.org
Kim Voth 721-1250 secretary@hopemennonite.org

Church Office Hours

Dave Monday-Thursday 9:00 a.m.-3:00 p.m.
Cynthia Monday-Thursday 9:00 a.m.-1:30 p.m.
Kim Friday 9:00 a.m.-1:00 p.m.
Staff meeting Monday- 9:30-11 a.m.

Hope on Facebook: Follow the link on our website
hopemennonite.org and “like” Hope Mennonite Church to see
pictures and receive updates on church life.

First Fruits Giving:

Giving the first and best of what we are given
as a worship response to God.

February 28

Attendance-62

(Hope 22; Zoom live 37; Zoom recorded 3)

Offering \$4,387

Year-to-date \$25,996

Spending plan year-to-date \$43,269

Our Purpose:

As an Anabaptist community of faith empowered by the Holy Spirit, Hope Mennonite Church is calling and making disciples who bring Christ's love and peace to our world.

Welcome to worship at Hope Mennonite Church whether you are joining us in person or on Zoom. The service is available on Zoom recordings Monday-Thursday as well as YouTube.

Worship Participants

Worship leader: Amy Bellar
Pianist: Ruthie Goering
Scripture reader: Lee Schmucker
Worship tech: Randy Pinkerton
Zoom host: Michelle Jantz

MEETINGS THIS WEEK (March 7-13)

Tuesday -10:00 am Women's Bible Study: "Signs of Life" by Stephanie Lobdell; Contact person: Brenda Glanzer Lilliston
Wednesday -7:00 pm Youth group
Thursday -7:00 pm Women's Bible Study: "Who Will Be A Witness" by Drew Hart; Contact person: Brenda Glanzer Lilliston



You are invited to the series "Outrageous Justice" led by Marcus Loganbill. Today's focus is on "Justice that Redeems." The class will meet in the sanctuary and be available to Zoom participants 15 minutes following worship.

MEETINGS NEXT WEEK (March 14-20)

Sunday -Faith Seekers
Tuesday -10:00 am Women's Bible Study: "Signs of Life" by Stephanie Lobdell; Contact person: Brenda Glanzer Lilliston
Wednesday -7:00 pm Youth group
Thursday -7:00 pm Women's Bible Study: "Who Will Be A Witness" by Drew Hart; Contact person: Brenda Glanzer Lilliston

* * * * *

We are journeying through Lent. Lent is a season of the church year, from Ash Wednesday to Palm Sunday. It is a time for remembering and "joining" Jesus' journey to the cross and resurrection, for renewed attention to God's Word, for confession, and receiving God's forgiveness. This Lenten season, our calls to worship highlight God who makes **covenant**—who commits to faithful relationship.

The March 5 issue of "Anabaptist World" is available on the front entrance table. There are also some copies of past issues. Help yourself.

Sandwich Saturday coordinator: Would you consider getting a group together (4-5 people) to put together the sack lunches for April 3. At this point, you have the option of distributing or simply dropping them off at St. John's Episcopal Church at 10:30 am. There are also many other months available during the summer and fall. Sign up to donate cookies as well.

Camp Mennoscah is proceeding with plans for children and youth summer camps. Due to safety precautions, there will be a limit on the numbers of each camp. If you child/youth want to attend, you are encouraged to register early. You can do so online at www.campmennoscah.org. The church will provide a \$75 scholarship. Let the church office know by April 25.

Plants and Things Planning is now underway for the 2021 Kansas Mennonite Relief Sale to be held July 2 and 3 at the fairgrounds in Hutchinson.

One of the most popular booths at the KMRS is "Plants and Things". As many of you know, this is the place to purchase a variety of things for your gardens. You traditionally have been able to buy flowers, shrubs, and garden plants. Many people have counted on being able to get their tomato plants, cabbage starts, melon seedlings, annual flowers, bulbs, etc. at the KMRS. Because July 2 and 3 is a bit late to be thinking about purchasing plants and starting or adding to a garden, the **"Plants and Things" booth will be open on April 10, the time our sale is regularly scheduled. "Plants and Things" will be set up at the MCC Building in North Newton utilizing the parking lot and the warehouse facilities.** Some things are yet to be decided such as opening and closing times, drop off hours, flat pick up, etc., but we wanted you to know that **we will be accepting the plants that you wish to bring to the sale.** So please start the seeds that will become a part of your contribution to MCC and the sale event. For more information and answers to questions, please contact Kristi Unruh at 620-3456867 or by email at kdunruh97@gmail.com or you can contact Jim Robb at 620-747-0186 or by email at jimandbeatyrobb@gmail.com.

During the coming months, songs from our new hymnal “Voice Together” will be a part of our Sunday morning worship. In addition, some of the preludes and offertories will also feature new arrangements and will be listed accordingly. This gives us the opportunity to familiarize ourselves with this new resource. We look forward to the day when we can sing again and learn even more.

Bohne Berrogi Sales. As with many things related to the Kansas Mennonite Relief Sale, the usual order of business will not be possible due to Covid-19. To make sure that people have the opportunity to purchase and take home some bohne berrogi, the Bohne Berrogi Committee will be making and selling this ethnic delight at Moundridge High School on **April 3**. The Bohne Berrogi will be sold, by the dozen, from 9:30 AM to 10:30 am. at \$20a dozen, NO sauce will be provided. No advance orders will be taken. This will be the only opportunity to purchase Bohne Berrogi unless some are not sold. Left overs will be frozen and sold at a later date or at the Relief Sale in July. Come to Moundridge High School between 9:30 AM and 10:30 AM on April 3 and support the MCC Relief Sale with your purchase.

Prayers for the wider church

...Pray for ongoing recovery in Western District Conference congregations and communities that experienced damage and disruption recently in extreme winter weather.

...Pray for more individuals to respond to God’s call to walk alongside people in their neighborhood and envision a faith community where the gospel includes social justice and meeting the human and spiritual needs that are present.

...Pray for Mennonite Mission Network African partnerships in Benin, Botswana, Burkina Faso, Ivory Coast, Democratic Republic of Congo, Ethiopia, Ghana, Nigeria, Senegal and South Africa.





Working Men of Christ works with former inmates to find meaningful employment with the goal of becoming financially stable and independent. Do you have connections to those who might be willing to hire one of our brothers in Christ?

Witness and Outreach has partnered with Working Men of Christ and has set a goal of \$12,000 for financial support. To date \$6,350 has been received and \$6,000 distributed. We challenge ourselves to give above and beyond; \$2.00 spent on a coffee five days a week, amounts to \$520 for the year. Learn more about WMOC at <https://www.workingmenofchrist.org>

Mountain of God

MOUNTAIN OF GOD Irregular



1 Come, let us go — to a place that is pure, to
 2 From each cor - ner and — end of the earth, we'll
 3 New life a-waits — for — all who be-lieve; —



learn a - bout love — and wipe a - way tears; — to
 gath - er to - geth - er to sing of your worth, — of
 all who love mer - cy, do jus - tice, walk hum - bly. With



melt swords of steel and hearts made of stone, — good
 blind who can see and wea - ry who rest, —
 Christ as our guide u - nit - ed we'll be; —



set pris - 'ners free and give stran - gers a home.
 news for the poor, — free - dom for op - pressed.
 liv - ing the king - dom, se - cure in God's peace.

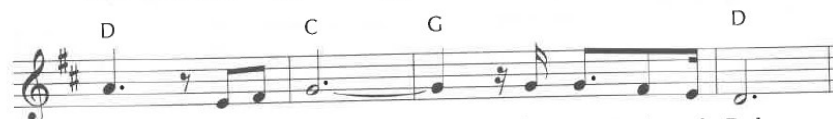
Refrain



So come, come as you are, oh, come,



from near and far, oh, come, sal - va - tion we'll



taste as we climb the moun - tain of God.



My Lighthouse

MY LIGHTHOUSE Irregular

B E2 B E2 B

1 In my wres-ting, and in my doubts, in my fail-ures,
 2 In the si-lence, you won't let go. In the ques-tions,
 3 I won't fear what to-mor-row brings. With each morn-ing,

F#sus B E2

you won't walk out. Your great love will lead me
 your truth will hold. Your great love will lead me
 I'll rise and sing. My God's love will lead me

B E2 B/D# F#sus B

through: you are the peace in my trou-bled sea, whoa, oh,
 through: you are the peace in my trou-bled sea, whoa, oh,
 through: you are the peace in my trou-bled sea, whoa, oh,

E2 B/D# F#sus B

you are the peace in my trou-bled sea. To verse 2
 you are the peace in my trou-bled sea. To refrain
 you are the peace in my trou-bled sea. To refrain

Refrain E2 B G#m7 F#sus E2

My Light-house, my Light-house shin-ing in the dark-

B G#m7 F#sus E2 B

-ness, I will fol-low you! Oh, my Light-house,

G#m7 F#sus E2 B G#m7

my Light-house, I will trust the prom-ise: you will car-ry me



F#sus E2 B F# E2 B

safe to shore, safe to shore,

F# E2 B F# B

safe to shore, safe to shore. *To verse 3 To bridge*

Bridge E2 B G#m7 F# E2

Fire be-fore us, you're the bright-est. You will

B 1-3 G#m7 F# 4 G#m7 F# *To refrain*

lead us through the storms. through the storms.

Calm Me, Lord

680

CALM ME, LORD 8.7.9.7

D A/C# Bm G

Calm me, Lord, as you calmed the storm; still me,

D Em7 Asus A D A/C#

Lord, keep me from harm. Let all the tu - mult with -

Bm7 G/B D/A Repeat as desired Bm Em7 Asus A

in me cease: en - fold me, Lord, in your peace.

Last time Bm Em7 Asus A D

Lord, en - fold me in your peace.

Be Still, My Soul

FINLANDIA 10.10.10.10.10.10

F C7/G F B♭ C F

1 Be still, my soul! for God is on your side;
2 Be still, my soul! for God will un-der-take
3 Be still, my soul! the hour is has-t'ning on

C7/G F B♭ F

bear pa-tient-ly the cross of grief or pain:
to guide the fu-ture sure-ly as the past.
when we shall be for-ev-er in God's peace;

Dm F C Gm

leave to your God to or-der and pro-vide,
Your hope, your con-fi-dence, let noth-ing shake;
when dis-ap-point-ment, grief, and fear are gone,

F/C B♭ A

who through all chang-es faith-ful will re-main.
all now mys-te-rious shall be clear at last.
love's joys re-stored, our striv-ings all shall cease.

For capo chords, see #649.

Text: Catharina A. D. von Schlegel (present-day Germany), 1752, *Stille, mein Wille*; trans. Jane Laurie Borthwick (Scotland), 1855, alt.
Music: Jean Sibelius (Finland); arr. *The Hymnal*, © 1933, 1961 Presbyterian Board of Christian Education

F Dm F C Gm

Be still, my soul! your best, your heav'n-ly Friend
Be still, my soul! the waves and winds still know
Be still, my soul! when change and tears are past,

F/C C7 F

through thorn-y ways leads to a joy-ful end.
the voice that calmed their fu-ry long a-go.
all safe and bless-ed we shall meet at last.